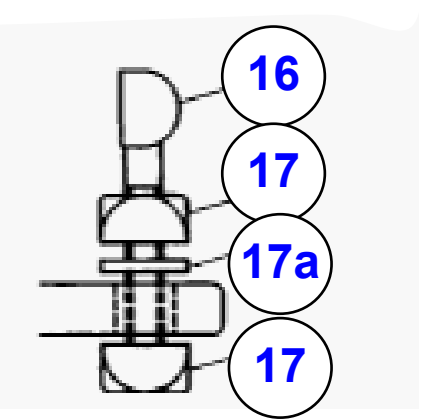
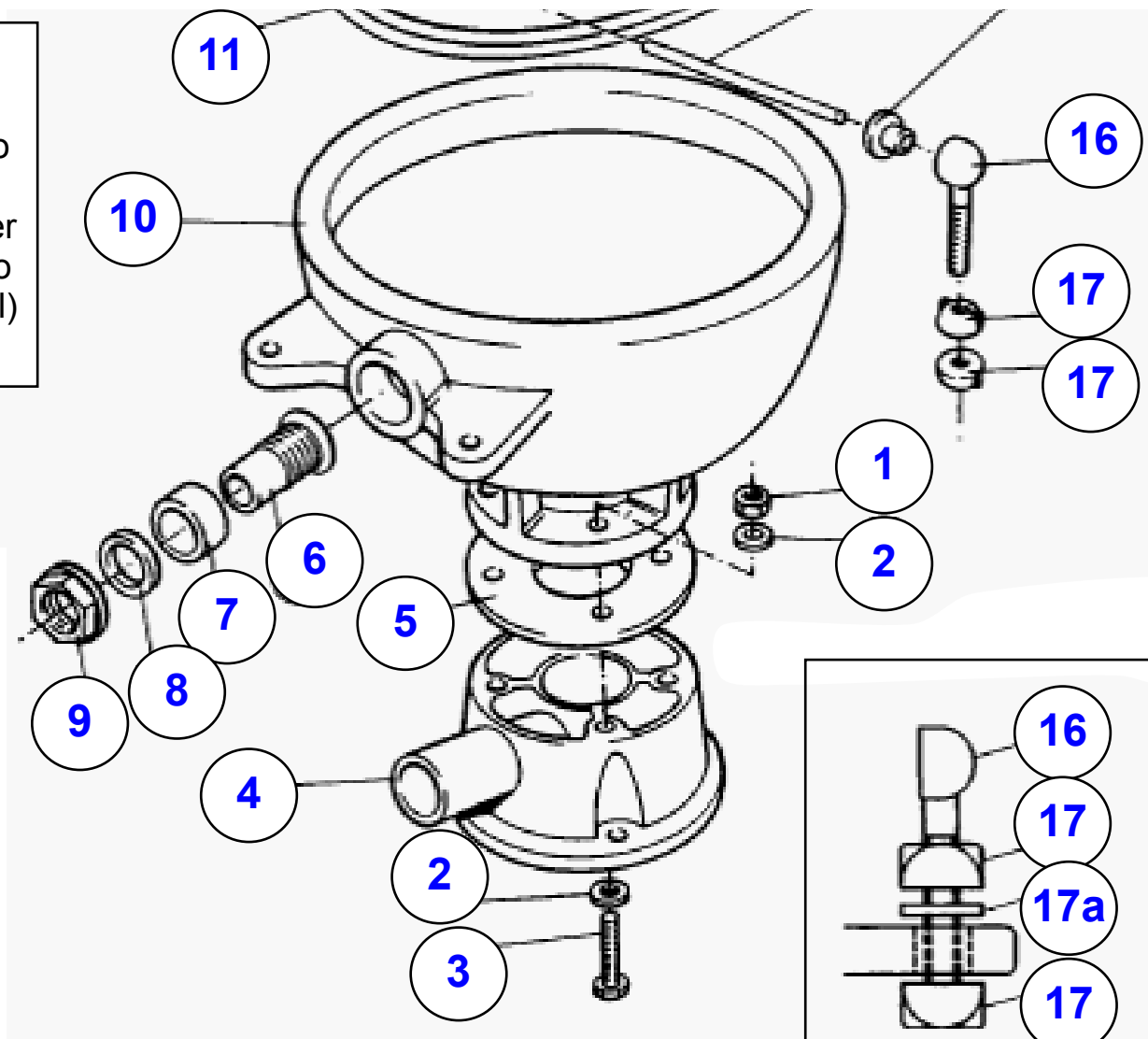
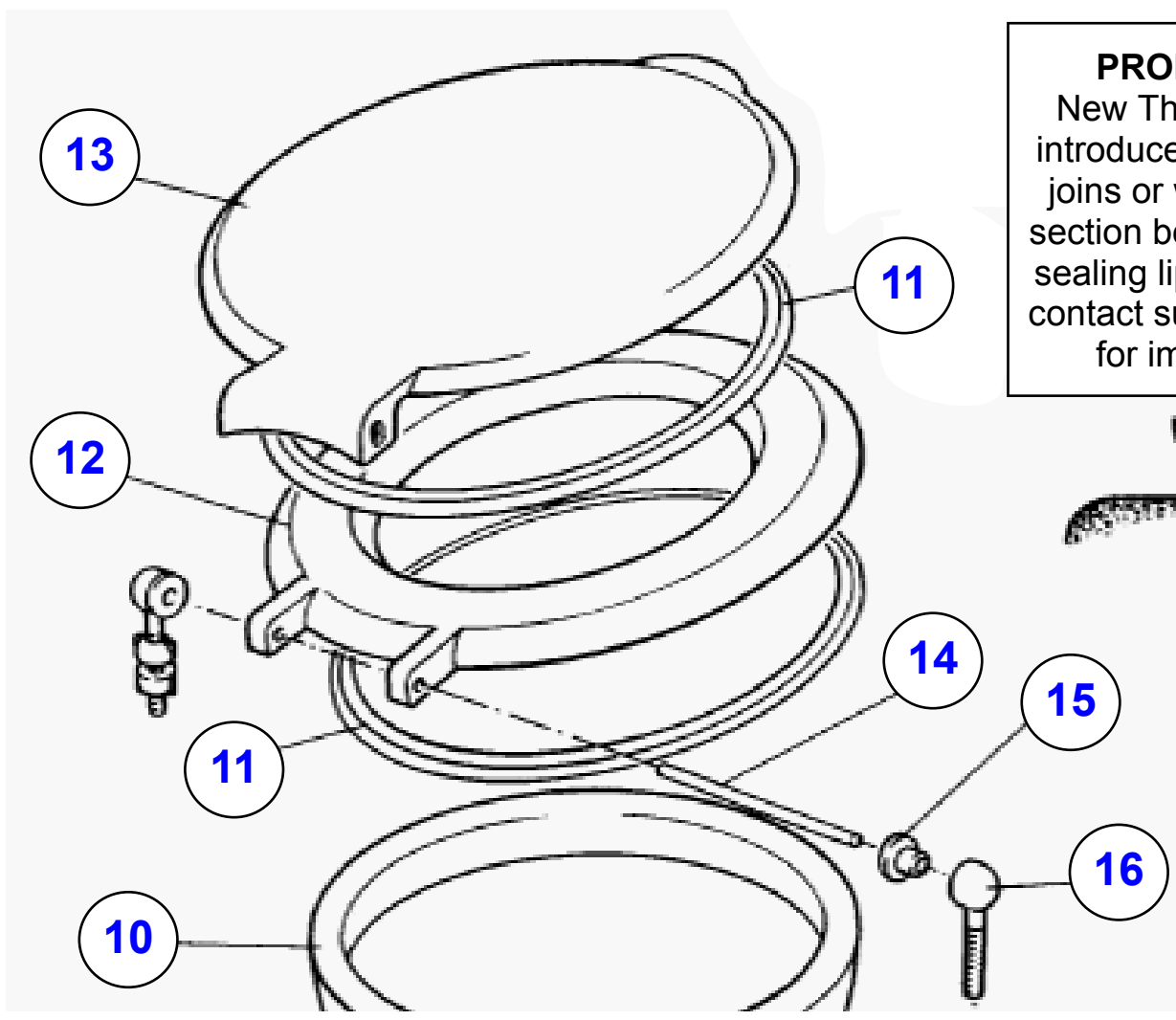


PRODUCT UPDATE
 New Thermo-set seal (11) introduced July 1993 with no joins or weld points. Cross-section below showing longer sealing lip conforms better to contact surface (seat or bowl) for improved vacuum



PRODUCT UPDATE
 New white rubber washer for dome nut

- | | | | | | |
|---|-------------------------|-----|-------------------------|--------|-------------------------|
| 1 | TBB7215 | 5 | TLZ9010 | 13 | TLZ9075 |
| 2 | TLZ9021 | 6-9 | TLZ9031 | 14 | TLZ9405 |
| | TLZ9022 | 10 | TLZ9025 | 15-17a | TLZ9056 |
| 3 | TLZ9015 | 11 | TLZ9065 | | |
| 4 | TLZ9005 | 12 | TLZ9070 | | |

Key: Click on any BLUE text to view the part details